

SS STRADA

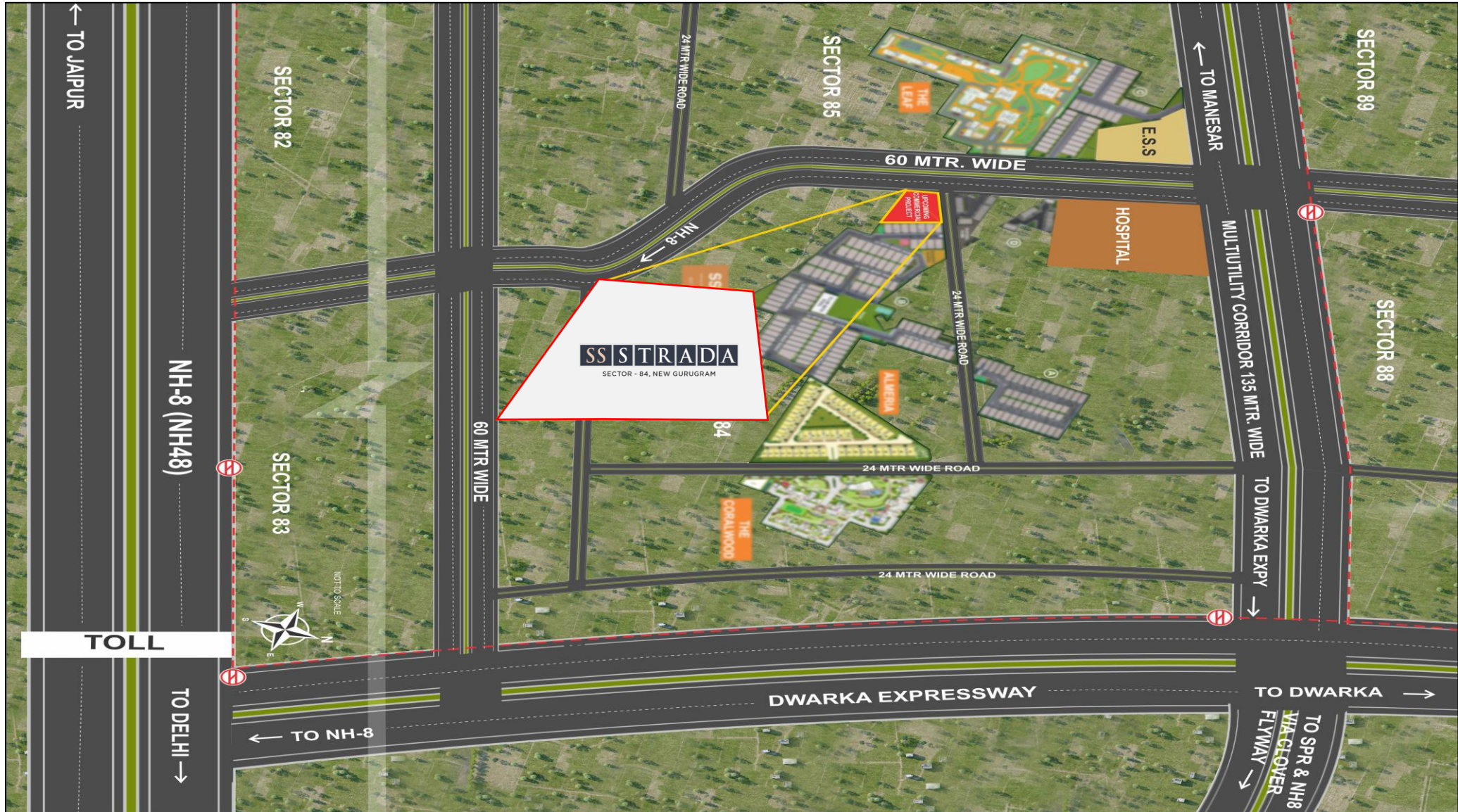
SECTOR - 84, NEW GURUGRAM



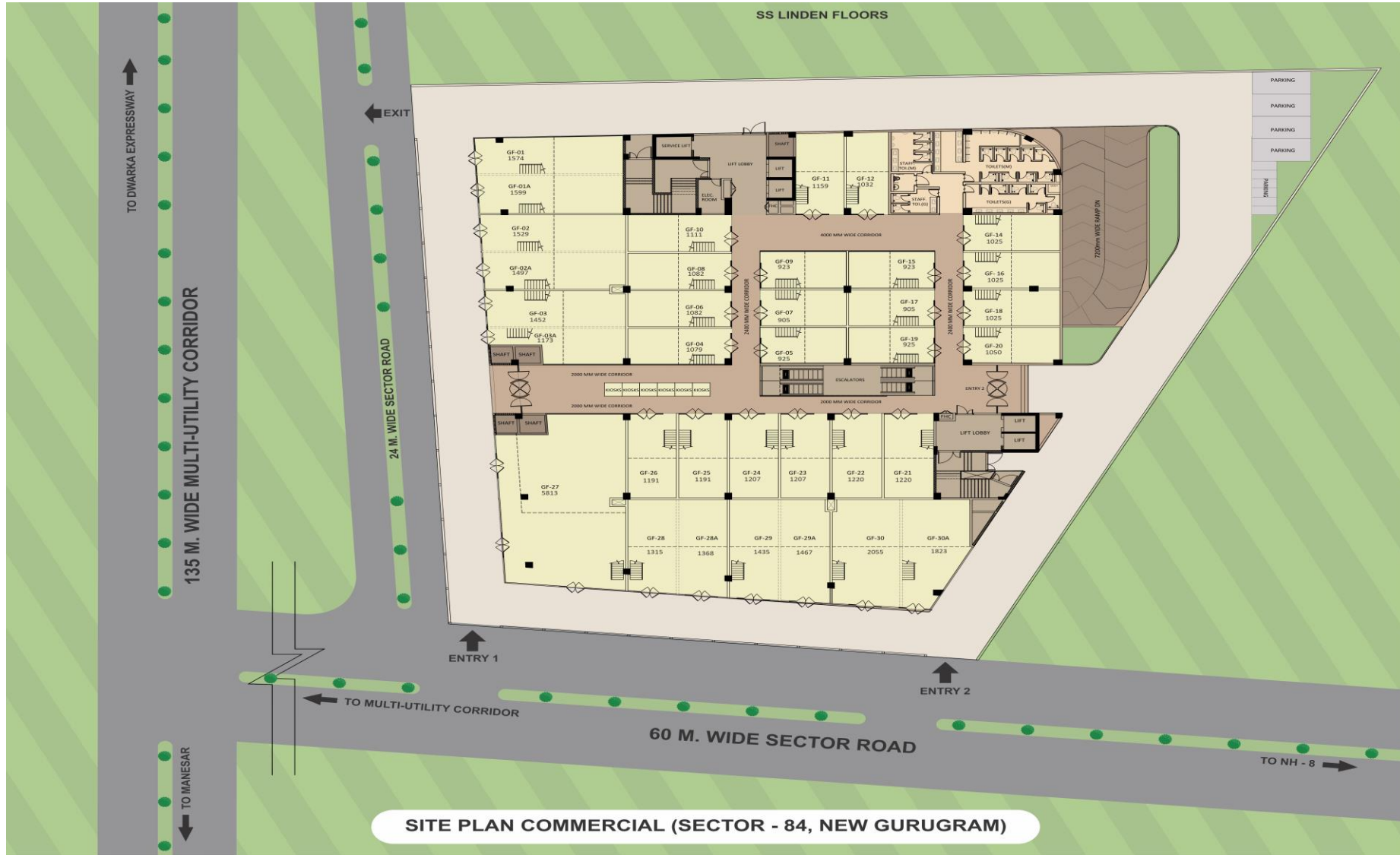
- *SS Strada project by SS Group at Sector-84, New Gurugram, with 1 acre area, surrounded by residential group housing and amenities.*
- *It's a low rise retail commercial with hypermarket compared to similar projects in the vicinity.*



# Connectivity



# Site Plan



SITE PLAN COMMERCIAL (SECTOR - 84, NEW GURUGRAM)



# Layout



*Ground Floor Plan*

# Layout



*First Floor Plan*

# Layout



*Second Floor Plan*

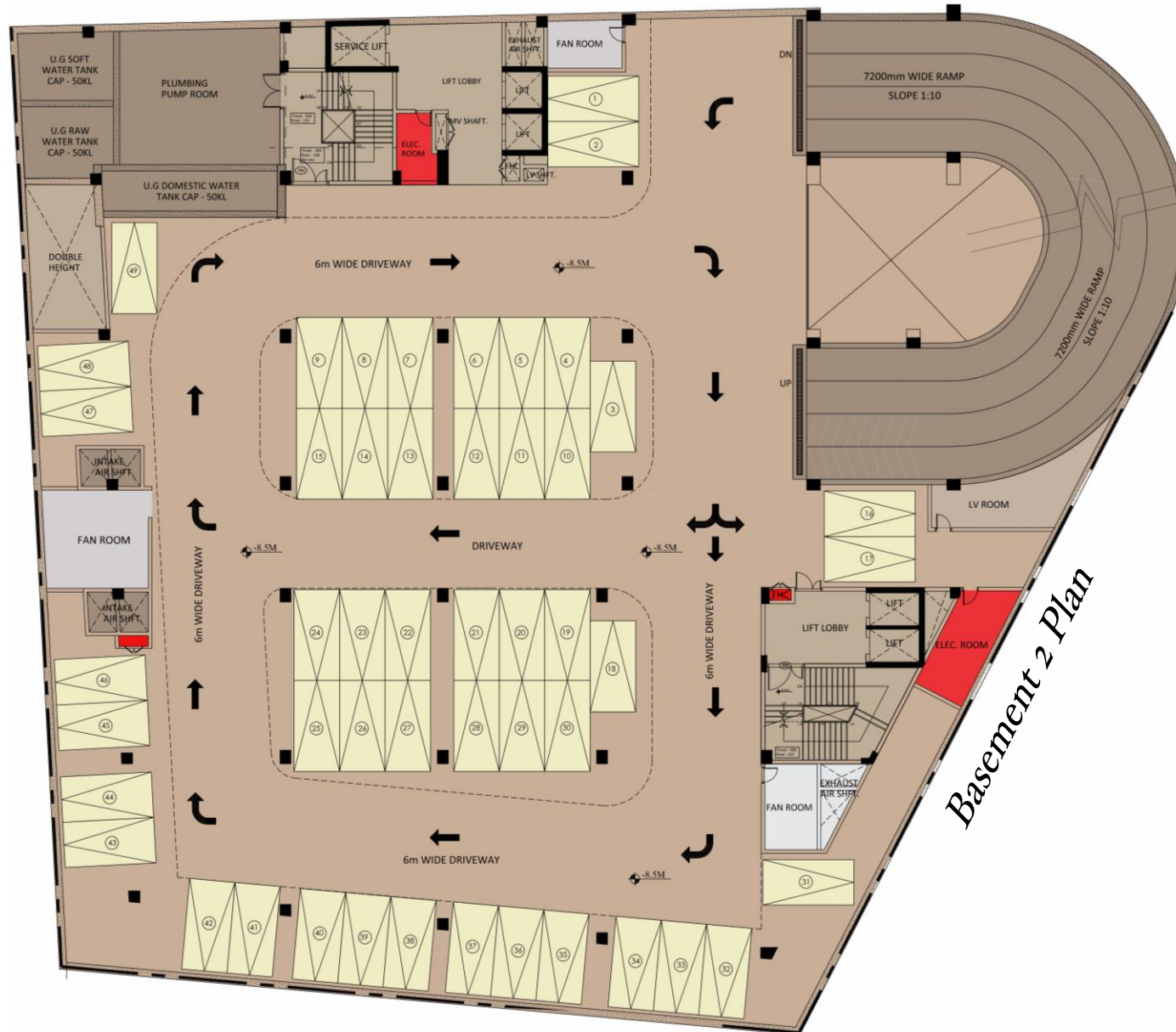
# Layout



*Basement 1 Plan*



# Layout



# Location Map



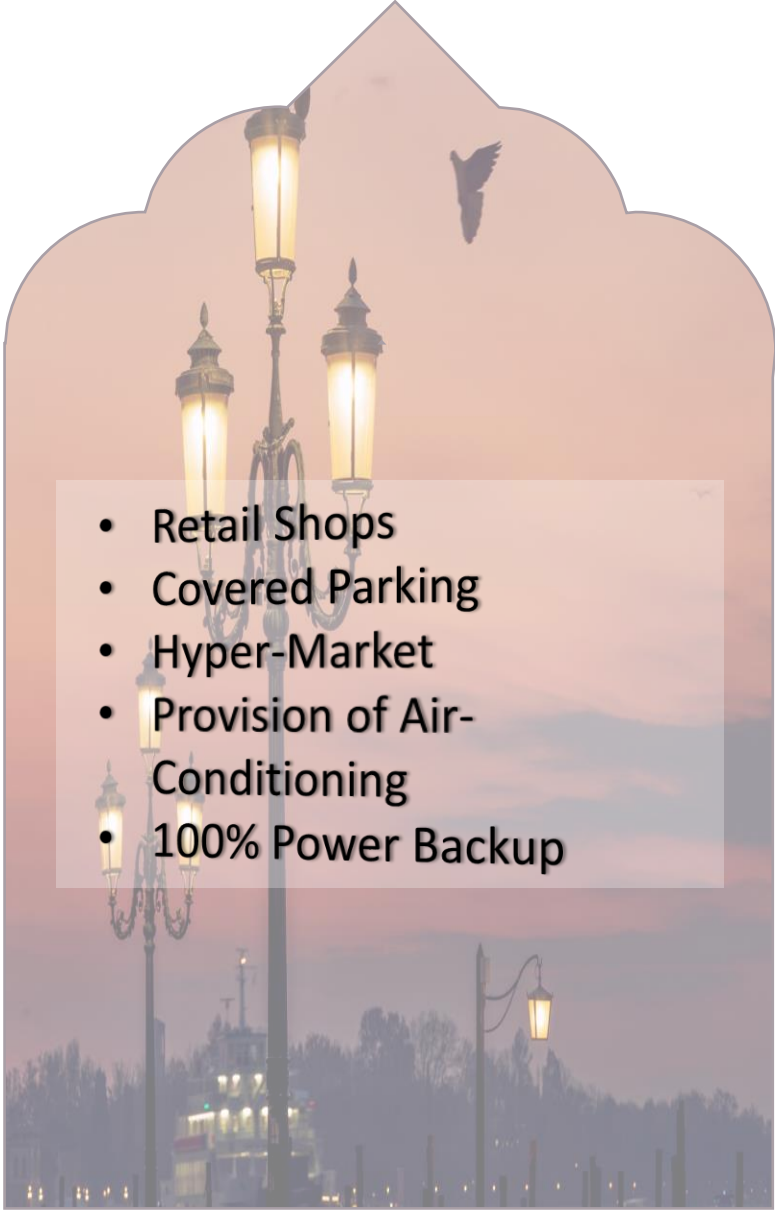
# SPECIFICATION





## Key Features



- 
- Retail Shops
  - Covered Parking
  - Hyper-Market
  - Provision of Air-Conditioning
  - 100% Power Backup



# Vicinity

*1 km from  
Dwarka  
Expressway*

*2.5 km from  
NH48  
(NH8)*

*3.5 km from  
Southern  
Periphery  
Road*

*5.8 km from  
Manesar*

*11.2 km  
from Rajiv  
Chowk*

*24.6 km  
from IGI  
Airport*



# Vicinity

## SCHOOLS

- *Delhi Public School*
- *St. Xavier's High School*
- *RPS International School*

## HOSPITALS

- *Arc Multi Specialty Hospital*
- *Aarvy Super Specialty Hospital*
- *Miracle Apollo Hospital*

## HOTELS

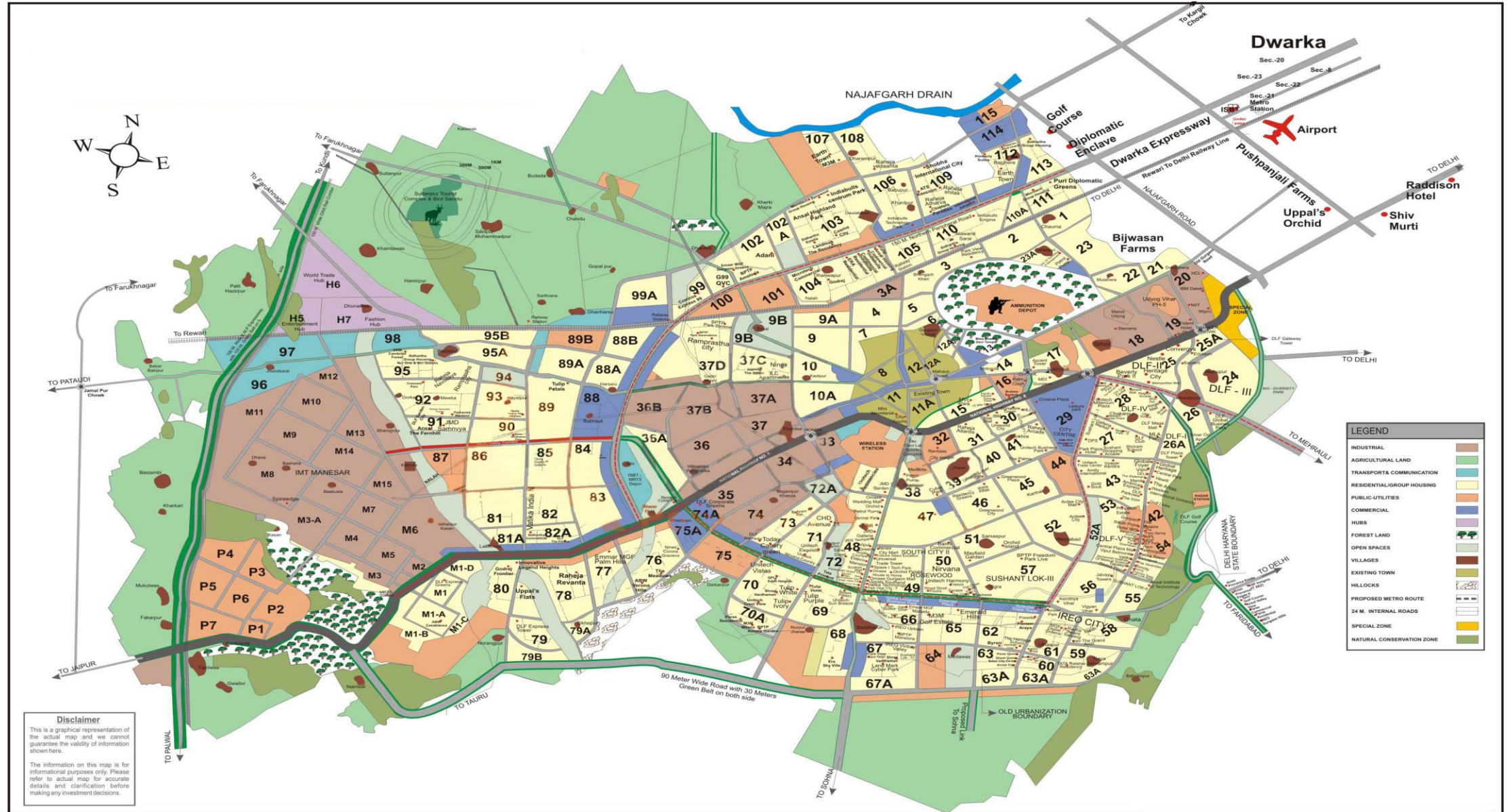
- *Hyatt Regency*
- *Ginger Manesar*
- *Hilton Garden Inn*

## RETAILS

- *SS Omnia 86*
- *Sapphire 83*
- *Town Square*
- *SS Highpoint*



# Sector Plan



**Thank You !**